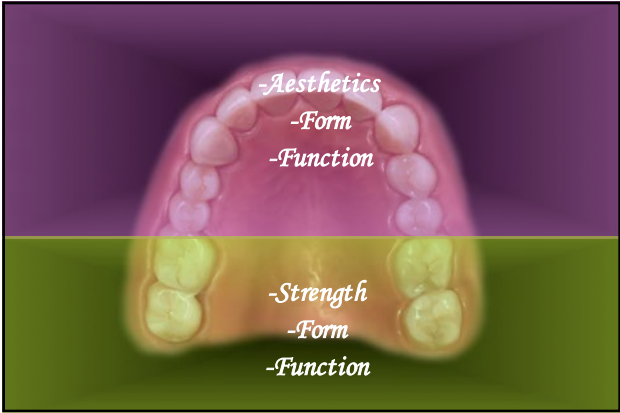
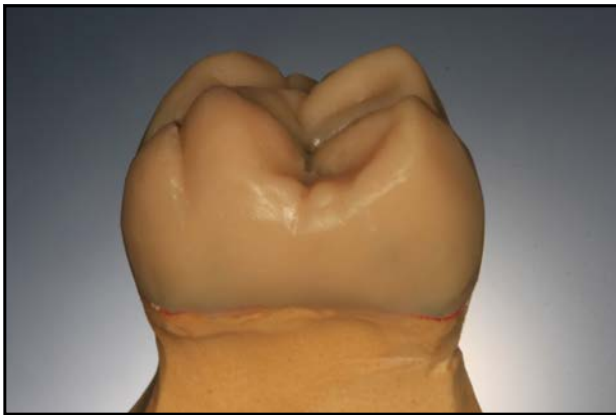


Materials Update



- ## What's available?
- ❖ *Pressed ceramic*
 - ❖ *Empress (Ivoclar)*
 - ❖ *e.Max (Ivoclar)*
 - ❖ *Authentic (MicroStar)*
 - ❖ *Noritake Pressed (Noritake)*
 - ❖ *Finesse All-Ceramic (Dentsply)*

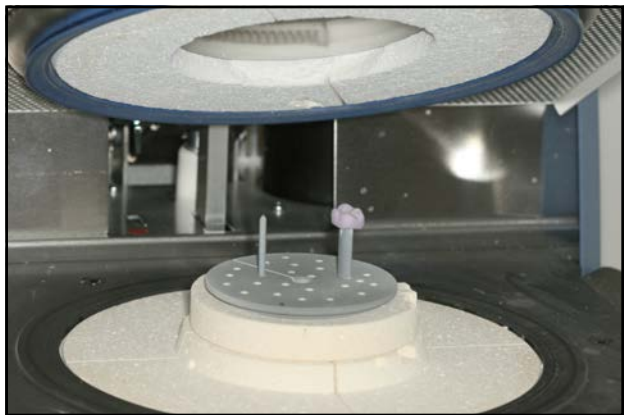
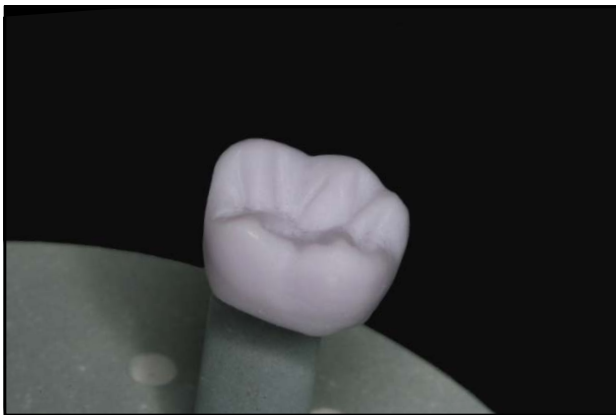
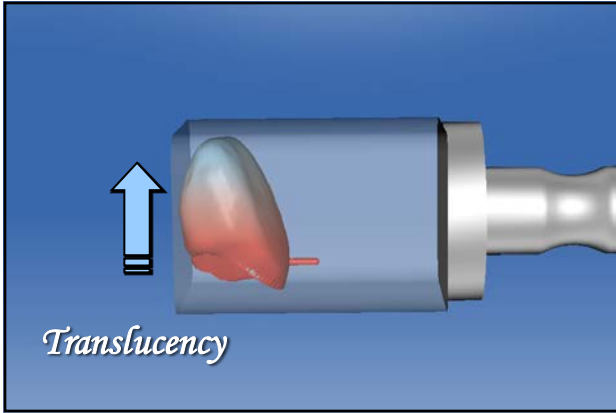


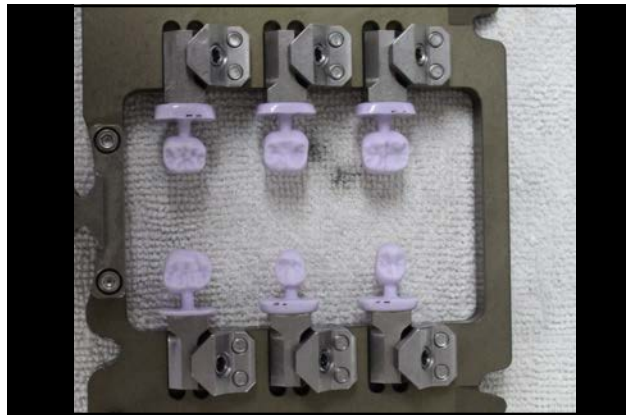
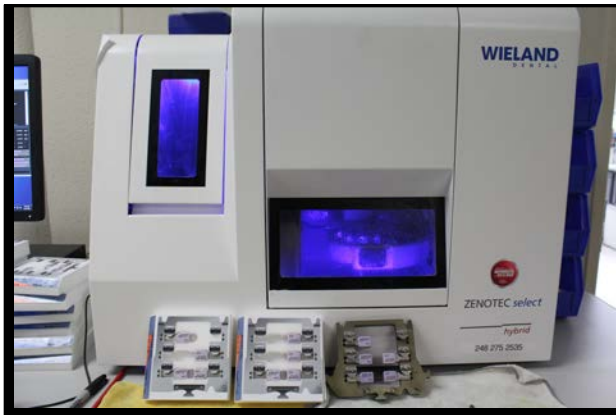


What's available?

- ❖ *CAD ceramic*
 - ❖ *Empress CAD (Ivoclar)*
 - ❖ *e.Max CAD (Ivoclar)*









What's available?

- ❖ *Powder-liquid ceramic*
 - ❖ *Avante' (Pentron)*
 - ❖ *Ceramco 3 (Dentsply)*
 - ❖ *Creation (Jensen)*

Leucite Reinforced Glass Ceramic

Pressed Empress and Empress CAD

Advantages of Empress

- ❖ *Great aesthetics, especially with brighter shades*

Advantages of Empress

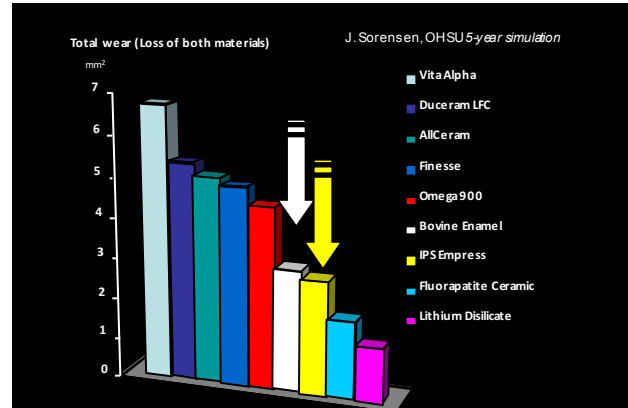
- ❖ *Great aesthetics, especially with brighter shades*
- ❖ *Time tested (18+ years)*
- ❖ *High strength (190-220 mPa flexural strength)*
- ❖ *Ability to see final contour before it becomes glass*

Advantages of Empress

- ❖ *Great aesthetics, especially with brighter shades*
- ❖ *Time tested (18+ years)*
- ❖ *High strength (190-220 mPa flexural strength)*
- ❖ *Wax to full contour prior to becoming glass*
- ❖ *Marginal fit*

Advantages of Empress

- ❖ Great aesthetics, especially with brighter shades
- ❖ Time tested (18+ years)
- ❖ High strength (190-220 mPa flexural strength)
- ❖ Wax to full contour prior to becoming glass
- ❖ Marginal fit
- ❖ Wear compatibility



Advantages of Empress

- ❖ Great aesthetics, especially with brighter shades
- ❖ Time tested (18+ years)
- ❖ High strength (190-220 mPa flexural strength)
- ❖ Wax to full contour prior to becoming glass
- ❖ Marginal fit
- ❖ Wear compatibility
- ❖ Conservation of tooth structure

Empress Restorations (minimal thickness)

- ❖ Veneers
 - ❖ 0.2 mm+
- ❖ Crowns
 - ❖ Facial and lingual
 - ❖ 1.0 mm+
 - ❖ Occlusal
 - ❖ 1.5 mm +

Lithium disilicate Reinforced Ceramic

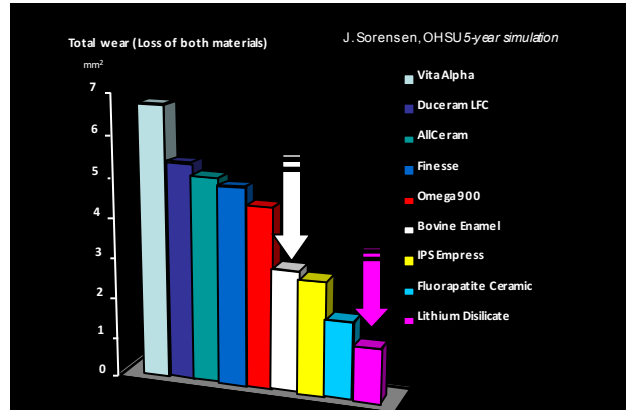
Pressed e.Max and e.Max CAD

Advantages of e.Max

- ❖ Great aesthetics, especially with more natural shades and when matching existing dentition

Advantages of e.Max

- ❖ Great aesthetics, especially with more natural shades and when matching existing dentition
- ❖ Time tested (10+ years)
- ❖ Very high strength (390-420 mPa flexural strength)
- ❖ Wax or CAD design to full contour prior to becoming glass
- ❖ Marginal fit
- ❖ Wear compatibility

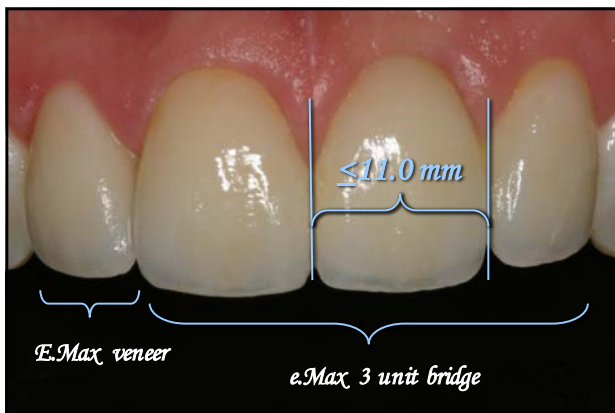


Advantages of e.Max

- ❖ Great aesthetics, especially with more natural shades and when matching existing dentition
- ❖ Time tested (10+ years)
- ❖ Very high strength (390-420 mPa flexural strength)
- ❖ Wax or CAD design to full contour prior to becoming glass
- ❖ Marginal fit
- ❖ Wear compatibility
- ❖ Conservation of tooth structure

Advantages of e.Max

- ❖ Great aesthetics, especially with more natural shades and when matching existing dentition
- ❖ Time tested (10+ years)
- ❖ Very high strength (390-420 mPa flexural strength)
- ❖ Wax or CAD design to full contour prior to becoming glass
- ❖ Marginal fit
- ❖ Wear compatibility
- ❖ Conservation of tooth structure
- ❖ Anterior bridges





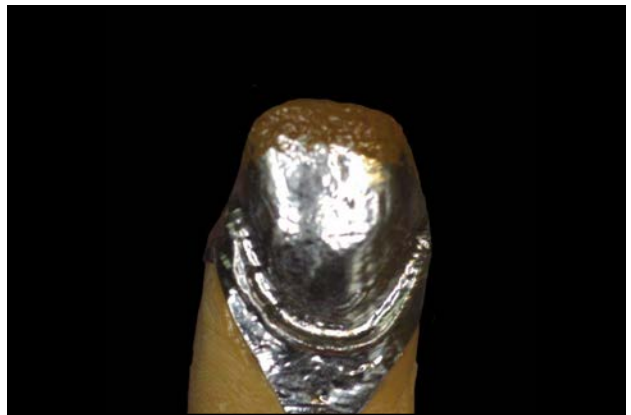


*Powder-Liquid
Ceramics*





Foil Technique





Advantages of Powder-liquid

- ❖ *Ability to modify translucencies and opacities within the same restoration*

Advantages of Powder-liquid

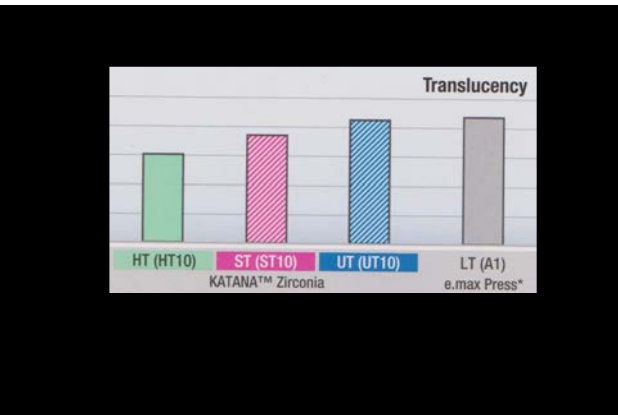
- ❖ *Ability to modify translucencies and opacities within the same restoration*
- ❖ *More potential for internal coloring and layering*

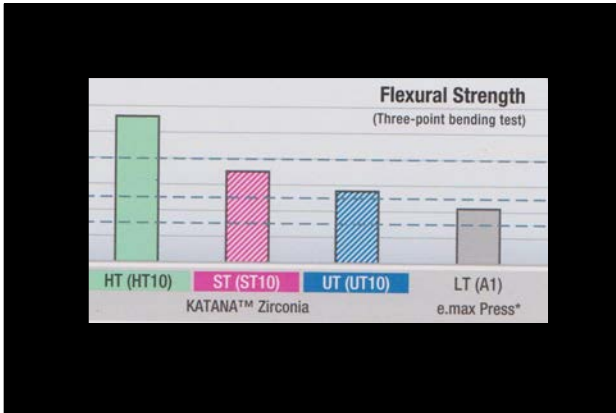




*Full Contour Zirconium-oxide
(Bruxer)*

HORNBOOK
DESIGN FOR DENTISTS





Finishing Techniques

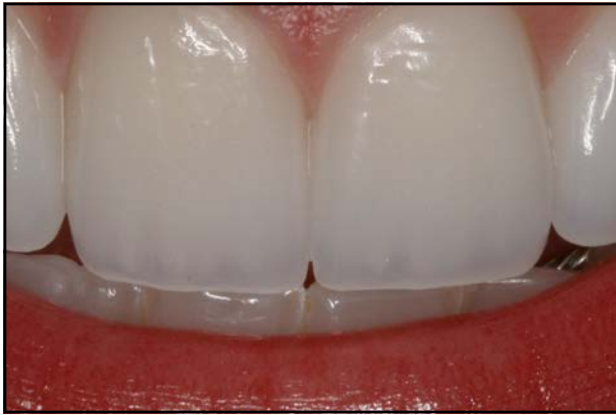
- ❖ *Shaded or stained*

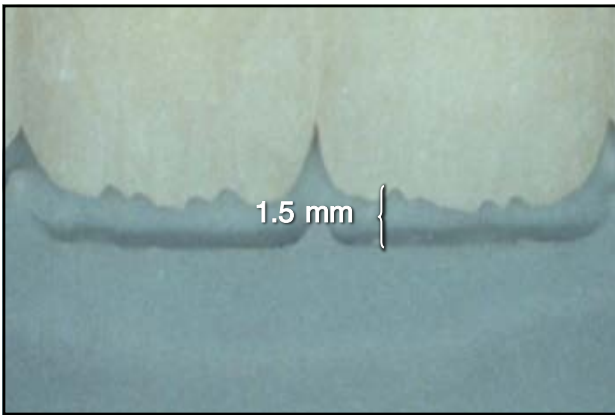


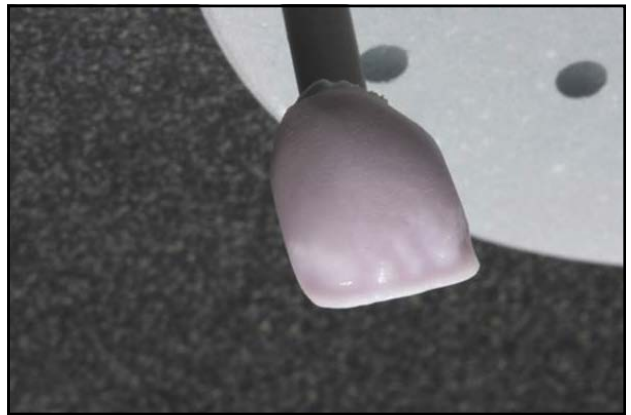
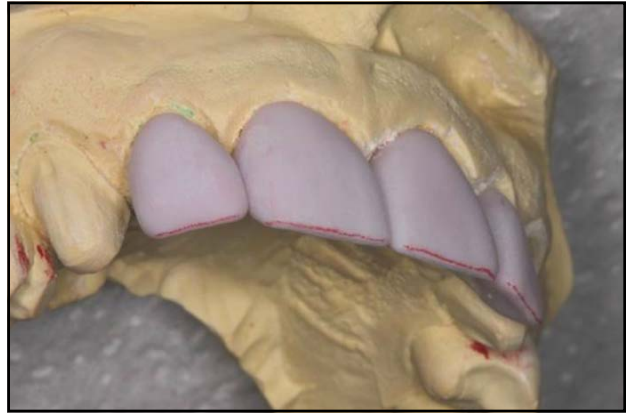


Finishing Techniques

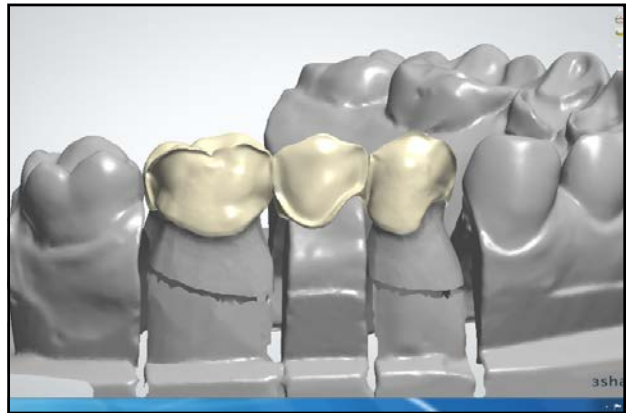
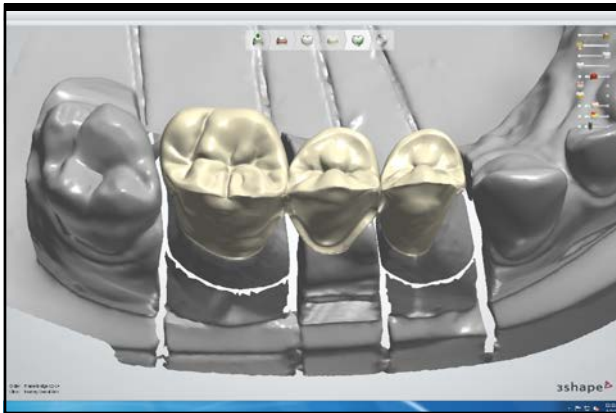
- ❖ *Shaded or stained*
- ❖ *Cutback and layered*













Where do I use what?

- ❖ *Empress*
 - ❖ *50% of my veneer cases*
 - ❖ *Bright final shades*
 - ❖ *Patients with ruddy complexions*

Where do I use what?

- ❖ *E.Max*
 - ❖ *Shades 040 (BL 4) or darker*
 - ❖ *Matching existing dentition*
 - ❖ *Patients with Mediterranean/ Latin/warmer complexions*
 - ❖ *Anterior Bridges*
 - ❖ *All Posterior teeth*

Where do I use what?

- ❖ *Powder-liquid ceramics*
 - ❖ *Tetracycline cases*

Where do I use what?

- ❖ *Zirconium-oxide*
 - ❖ *Monolithic full contour single unit molars on destroyers or minimal occlusal clearance*
 - ❖ *As a substructure for posterior bridges and anterior bridges with pontic width greater than 11.0 mm*

