



Designing the Smile

The key to Aesthetic Success!

The Rationale for Design

We are the conduit between the patient and Ceramist!

The Design Process

Determines and addresses the variables of a smile!

What are we looking for as we design the smile?

Think Dentures!!!

The length of the Central Incisors

- ❖ Do they show at rest?
- ❖ Can we lengthen?
- ❖ Must we lengthen?

Smile Line

Does it follow the lower lip?
Is there a gradient from canine to first molar?



Incisal Edge Inclination

Must be parallel to Inter-pupillary line



Profile

“deflective” vs. “reflective”

Deflective Surfaces

- ❖ Look smaller than actual
- ❖ Look darker than actual



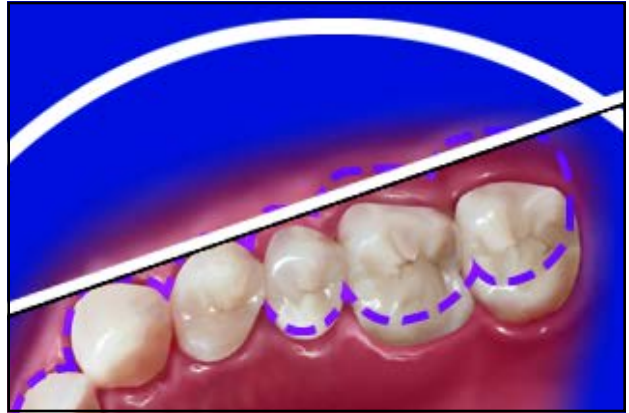
Midline

Does it bisect the face?
Is it parallel to the long axis of the face?
Is it perpendicular to the inter-pupillary line?

Buccal Corridor


If you laid a straight edge on the height of contour of the canine, would the straight edge be touching the height of contour of the premolars and first molar?






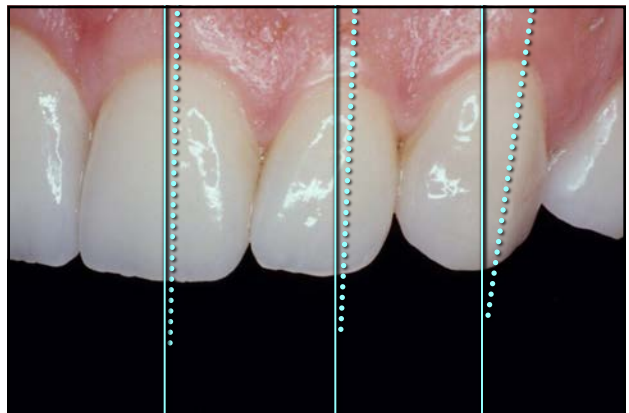
Gingival tissue

- ❖ Are the tissue levels symmetrical?
- ❖ Is there too much gingival tissue showing at full smile?
- ❖ Are the apices of the tissue correctly placed on each tooth?




 A close-up photograph of the upper front teeth. Four vertical yellow lines are drawn from the gingival margin down to the teeth, marking the apices of the gingival tissue on each tooth.

Are the apices symmetrical?

Partners in Excellence



AMD

Picasso Lite

*What do we now do
with this information?*

The Clinical Mock-up

